

"Green" now integrated in ArchiCAD!



Early design phase

Sustainability is all about making the right choices, and 80 percent of design choices on energy efficiency are made early in the design phase. EcoDesigner™ helps architects optimize the design by identifying the energy performance implications of design alternatives. EcoDesigner brings sustainability to the core of Virtual Building / Building Information Modeling.

Informed decisions

Quick, comprehensive, and easy to use: evaluate energy consumption, monthly energy balance, operation cost, carbon emission and other indicators to inform the design process and make the best design choices – no matter where the building is built.

"One-click" evaluation for architects

GRAPHISOFT EcoDesigner is available from ArchiCAD -- and the best news is that all architects can use it right away! EcoDesigner turns the ArchiCAD virtual building into a building energy model that can be used from the very first conceptual design.

"...as contractor and in terms of quantity surveying, program and delivery, in combination with Passivhaus integration of services, ArchiCAD really met my needs..."

James Anwyl of Eurobuild, designer and builder of Hadlow Collage Rural Regeneration Centre, UK's first Certified Educational Passivhaus



Model

BIM-integrated Building Energy Modeling

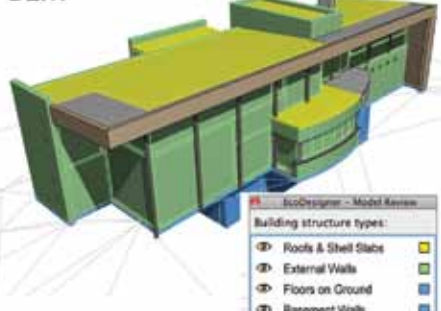
- **Automated Model Analysis** – updates the building energy model automatically during architectural design
- **Color-coded building energy model display** – on the floor plan and in 3D

BIM



- **Model Review Palette** – enables manual optimization of the automatically generated building energy model
- **Location-specific Weather Data** – ASHRAE standard-compliant IWECC climate data for ArchiCAD cities and online weather server for custom locations.
- **Additional data input** – fast, easy and intuitive. Use the robust feature set to collect and define variables, and let EcoDesigner do the rest.

BEM



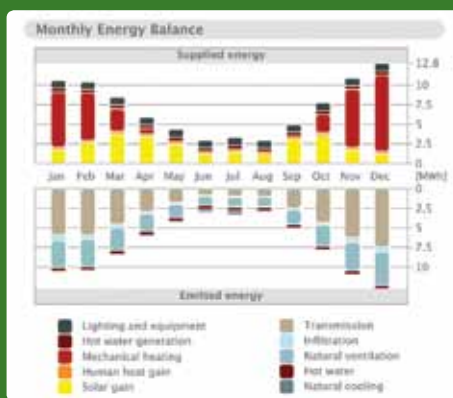
Evaluate

Runtime is just a few seconds, even on large projects or multiple buildings

- **VIPCore Calculation Engine** – StruSoft's dynamic energy analysis integrated in ArchiCAD
- **Engine Balance Simulation** – fast and easy hour-by-hour results

Start Evaluation...

One click of the mouse and EcoDesigner determines annual building energy performance.



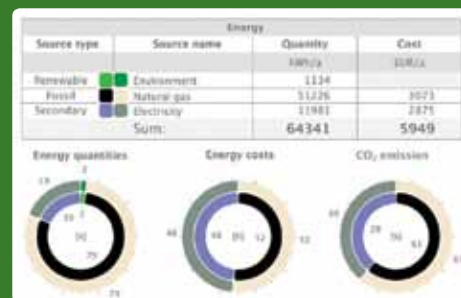
"As environmentally conscious architects, the ability to quickly and effectively perform energy analyses on our building models is beneficial to us and it adds tremendous value to our clients."

Russ Sanders, AIA, Orcutt | Winslow, US

Report

Accurate, easy to read consumption, cost and emission info worldwide

- **Monthly Energy Balance** – Detailed breakdown of key energy characteristics in exportable PDF and XLS formats
- **Energy Consumption Report** – straightforward pie charts and numeric tables show energy consumption according to target (cooling, heating, etc.) and source (coal, electricity, natural gas, etc.)
- **Building Performance Metrics** – shell characteristics, specific annual demands, primary energy consumption, operation cost and carbon footprint.



FOR GRAPHISOFT ARCHICAD 15

GRAPHISOFT EcoDesigner runs on both MAC and Windows. Software and hardware requirements correspond to those of ArchiCAD 15.

For more details, contact any GRAPHISOFT office, or visit: www.graphisoft.com

Germany
 GRAPHISOFT Deutschland GmbH.
 Phone: +49 (89) 746 430
 Fax: +49 (89) 746 43299
 E-mail: mail@graphisoft.de
 Web: www.graphisoft.de

United States
 GRAPHISOFT North America, Inc.
 Phone: +1 (617) 485 4203
 Fax: +1 (617) 485 4201
 E-mail: info@graphisoft.com
 Web: www.graphisoft.com

United Kingdom
 GRAPHISOFT UK Ltd.
 Phone: +44 (1483) 263 150
 Fax: +44 (1483) 263 151
 E-mail: mail@graphisoft.co.uk
 Web: www.graphisoft.com

Japan
 GRAPHISOFT Japan KK.
 Phone: +81 (3) 55 45 3800
 Fax: +81 (3) 55 45 3804
 E-mail: mail@graphisoft.co.jp
 Web: www.graphisoft.co.jp

Russia
 GRAPHISOFT Representative Office
 Phone: +7 495 510 2503
 E-mail: russia@graphisoft.com
 Web: www.graphisoft.ru

Spain
 GRAPHISOFT Spain, SL.
 Phone: +34 (91) 535 8750
 Fax: +34 (91) 535 8751
 E-mail: mail@archicad.es
 Web: www.archicad.es

GRAPHISOFT®